

## Features

- Built-in 100v/70v transformer
- Pendant type loudspeaker
- 5" full range speaker driver
- Power taps at 2.5w-5w-10w @100V
- Aluminum enclosure & metal grille of white color

## Description

The T-200A is a pendant speaker built-in 70v/100v transformer. The 70v/100v transformer technique reduces line losses on longer distance and allows easy parallel connection of multiple loudspeakers.

The built-in 5" full range speaker driver is designed of wide frequency response 130-15kHz, the multiple power taps of 2.5W, 5W & 10W could meet different applications varies from room size and ambient noise surroundings.

The aluminum enclosure and metal grille are of white color. Easy and secure wall mount installation through the supplied secured cable tails.

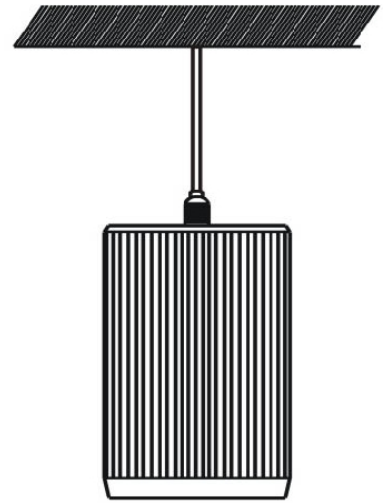
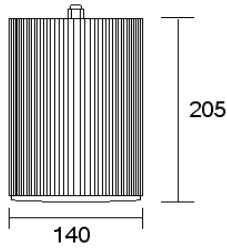
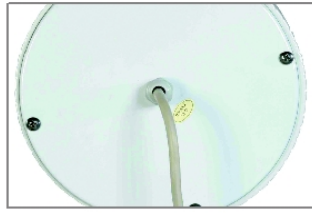
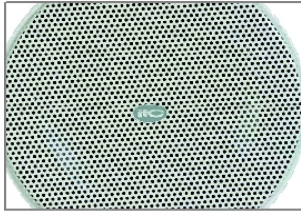
It is ideal choice for industrial and commercial applications in the outdoor area of train station, shopping mall, parking area and factory where background music and paging is needed.



## Specification

Model	T-200A
Power Taps @100V	2.5W, 5W, 10W
Power Taps @70V	1.25W, 2.5W, 5W
Impedance	Blue:Com Yellow:4KΩ Red:2KΩ Green:1KΩ
SPL(1W/1M)	91dB
Max. SPL (Rated W/1M)	101dB
Frequency Response (-10dB)	130-15KHz
Finish	Baffle: Aluminum, White Grille: Steel, White
Speaker Driver	5" x1
Dimensions	140x205mm
Weight	2.2kg
Mounting	With mounting bracket fixed by screw

**Appearance:**



**Frequency Response**

